

**Read this manual carefully before proceeding with assembly**

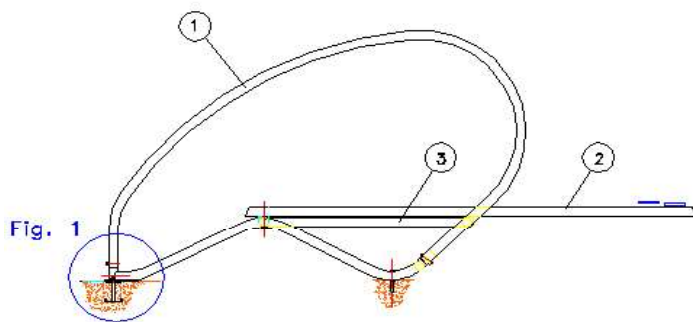
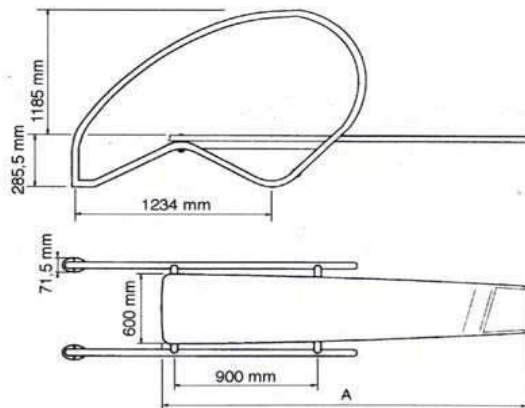
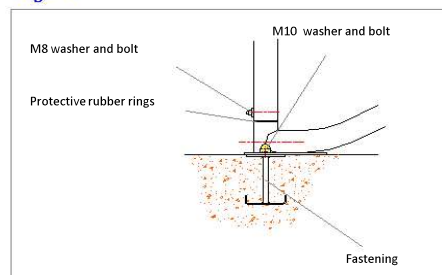


Fig. 1



**CHECK THE PACKAGING**

Check that the model's components are in a good state of repair.

**INSTALLATION**

1-Choose a suitable site bearing the following in mind:

- The size of the springboard.
- The minimum recommended safety gaps.
- The minimum recommended pool depth.

2-In order to properly and firmly fasten the springboard to the ground, you will need an area paved with concrete to serve as the foundations.

3-Drill holes to fasten the rear and front parts as shown, so that the springboard will be positioned as desired.

4-Place the back fasteners in the hole as shown (Fig. 1).

5-Pour in the concrete and wait for it to set.

6-Once the concrete has set, drill holes using a 12 mm drill bit for the front fasteners and put the plugs in place.

7-Affix the protective rubber rings that join the base to the rest of the handrail.

8-Pre-assemble the handrail's support brackets and the base of the springboard.

9-Put the assembled structure in place and fasten it (fasteners supplied) to the rear mounts without screwing too tightly.

10-Fasten the front end of the assembled structure by threading the concave ring through it and tightening it so that the previously mounted plug expands and remains in place.

11-Fasten the rung and the rear end of the handrail's base. Line up the handrail and the base of the springboard perpendicularly. The two parts can then be screwed together.

12-Mount the handrails (Pos. 1) by fitting them to the structure and fasten them using the fasteners supplied.

13-Place the springboard (Pos. 2) on the base of the handrail and line the holes up to thread in the M14 x 120 bolts. Ensure that the four protective rubber rings have been put in place.

14-Place the self-adhesive non-slip strips in the housing at the end of the board.

15-Tighten all fastenings and check that the assembly is safe.

POS.	CODE	DESCRIPTION	A
1	18541-0100	DYNAMIC HANDRAIL	
2	23199-1000	DYNAMIC SPRINGBOARD	2 m
2	23200-1000	DYNAMIC SPRINGBOARD	2,3 m

**MAINTENANCE**

Regularly check:

- That the fastenings to the ground and on the structure are in a good state of repair. Tighten them if necessary.
- That the protective rubber rings are in a good state of repair. Never allow the springboard (Pos. 2) to come into direct contact with the structure.
- That the non-slip strips at the front end are in a good state of repair.
- That there are no sharp edges that could cut or graze bathers.
- That the water and detergent used to clean the springboard (board and structure) does not drip into the pool.

**SAFETY WARNINGS**

Repair or replace any damaged components that could cause an accident immediately. Comply with the regulations in your country related to positioning and safety gaps.

**ADVICE FOR PREVENTING ACCIDENTS**

Ensure that there are no bathers in the safety area before diving. No more than 1 person at a time should dive off or stand on the end of the board.

**Once assembly has been completed, keep this manual in a safe place in case spare parts are needed in the future.**